

#ReconnectingSafely

A collaboration between the Malaysian & Singaporean Government



MINISTRY OF
INTERNATIONAL TRADE AND INDUSTRY



VACCINATED TRAVEL LANE (VTL) - LAND FOR MALAYSIA AND SINGAPORE

A guide on VTL-Land for Malaysia and Singapore
via land route

Edition 6, 30 DECEMBER 2021





About VTL-Land between Malaysia & Singapore

The VTL-Land initiative between Malaysia and Singapore was introduced to reconnect Malaysians and Singaporeans who have been separated from their family members or employers due to the COVID-19 pandemic. The VTL-Land commences on 29 November 2021.

1

Read

Read this guide thoroughly to ensure a smooth travel experience

2

Prepare

Get the necessary documentations ready

3

Travel

Start your journey safely

Travellers Categories



Malaysia and Singapore citizens



Malaysia and Singapore
Permanent Residents



Malaysia and Singapore
Long-term Pass holders

**Travellers must remain in either one country for at least 14 consecutive days before departure*



Adults **MUST** be fully vaccinated

Unvaccinated children below 12 years old **MUST**
be accompanied by vaccinated adults

#ReconnectingSafely

A collaboration between the Malaysian &
Singaporean Government





Fact file

Travellers Registration

- www.mysafetravel.gov.my (Singapore to Malaysia)
- <https://go.gov.sg/vtl-portal> (Malaysia to Singapore, for Long-Term Pass Holders only. Singapore citizens need not apply)

Mode of transport

- VTL-Land designated buses

Where to buy tickets

- www.causewaylink.com.my
- www.transtar.travel

Bus operating hours

- From Singapore : 9.30 am to 7.30 pm
- From Johor: 7.30 am to 9.30 pm

Check-in time

- At least 1 hour prior to departure time

Boarding and disembarkation points

- Larkin Sentral Bus Terminal (Johor)
- Queen Street Terminal (Singapore)
- Woodlands Temporary Bus Interchange (Singapore)



Testing protocol

- Undertake PCR or antigen rapid test (ART) within 2 days before departure
- On-arrival test upon arrival in Johor and Singapore

Vaccination certificate (with QR Code)

- Via MySejahtera if vaccinated in Malaysia
- Via Notarise portal, HealthHub, TraceTogether if vaccinated in Singapore

Vaccinated Travel Pass

- <https://go.gov.sg/vtl-portal> (long-term pass holders travelling from Malaysia to Singapore only)

Travel / Medical insurance

- Travellers should ensure they have sufficient insurance coverage for COVID 19-related medical treatment and hospitalisation costs (minimum coverage of SGD30,000)

Quarantine requirement

- No quarantine required

Useful URLs

- <https://www.mysafetravel.gov.my>
- <https://www.miti.gov.my>
- <https://www.mot.gov.my>
- <https://safetravel.ica.gov.sg>



VTL-LAND TRAVELLER'S JOURNEY



1

Pre-Departure

Prepare these softcopies:

- 1) Digital vaccination certificate
- 2) Vaccinated Travel Pass (only for long-term pass holder travelling from Malaysia to Singapore)

Download MySejahtera app or Singapore Trace Together app



2

Register at www.mysafetravel.gov.my (Singapore to Malaysia) or <https://go.gov.sg/vtl-portal> (Malaysia to Singapore)



3

Print Vaccination Certificate with QR code, Vaccinated Travel Pass (for long-term pass holder travelling from Malaysia to Singapore), Travel/Medical insurance is required too



4

Purchase bus ticket(s) via www.causewaylink.com.my or www.transtar.travel



5

Undertake PCR or antigen rapid test (ART) within 2 days before departure



VTL-LAND TRAVELLER'S JOURNEY



6

On departure day arrive at least 30-45 minutes earlier at boarding points



7

At Departure Points

Ensure these documents are in-hand:

- Proof of VTL-Land Registration for travellers entering Malaysia
- Proof of Vaccinated Travel Pass (only for long-term pass holder travelling from Malaysia to Singapore)
- RTK or ART / PCR Test results
- Vaccination Certificate
- Passport
- Travel/Medical Insurance
- Bus Ticket



8

● For Malaysians, please submit the SG Arrival Card (SGAC) under Foreign Visitors

● For Singapore Citizens, please submit electronic Health Declaration Card (eHDC) under Singapore Citizens, Permanent Residents & Long-Term Pass Holders, and upload your vaccination certificate QR code during the submission if you were vaccinated overseas



9

Upon-Arrival

● For travellers arriving at the Larkin Sentral Bus Terminal, proceed to do the On-Arrival Test

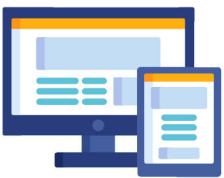
● Present all documentations at the immigration for clearance



10

Post-Arrival

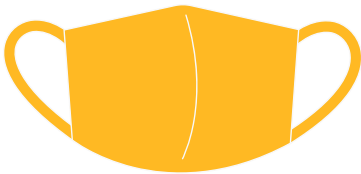
Check traveller's status on MySejahtera app or Singapore Trace Together app



Health protocol



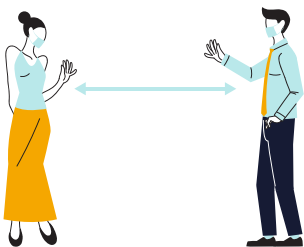
Up to 45 people
in a bus



Passengers must wear the
face mask throughout the
journey and maintain
physical distancing



Bus to be sanitised prior to
departure and after arrival



Self-care is your
best defense

#ReconnectingSafely

A collaboration between the Malaysian &
Singaporean Government





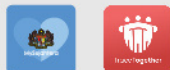
REQUIREMENTS FOR MALAYSIA-SINGAPORE VTL-LAND TRAVELLERS

TO ENTER
MALAYSIA

TO ENTER
SINGAPORE



Digital Vaccination Certificate
Download MySejahtera app or
Singapore Trace Together app



Vaccinated Travel Pass (VTP)
via url <https://go.gov.sg/vtl-portal>
(only for long-term pass holder travelling
from Malaysia to Singapore)



Register at www.mysafetravel.gov.my
(Singapore to Malaysia)



Print Vaccination Certificate
with QR code



Print Vaccinated Travel Pass (VTP)
(only for long-term pass holder travelling
from Malaysia to Singapore)



Purchase bus ticket(s) on
www.causewaylink.com.my
www.transtar.travel



Undertake PCR or antigen rapid test (ART)
within 2 days before departure



On-arrival RTK Test at
Larkin Sentral Bus Terminal



Submit SG Arrival Card (SGAC)
under Foreign Visitors



Electronic Health Declaration Card (eHDC)
via MySejahtera

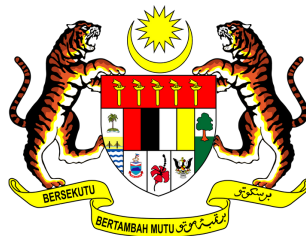


Note : Travellers are advised to have adequate travel / medical insurance coverage for
COVID-19 related medical treatment and hospitalisation costs, if required.

#ReconnectingSafely

A collaboration between the Malaysian &
Singaporean Government

Visit www.miti.gov.my for more details



**MINISTRY OF
INTERNATIONAL TRADE AND INDUSTRY**

#ECONOMICFRONTLINERS

